

INVENT TOMORROW TODAY

Empowering the next generation of tech founders



About BESTIU

The Bharatiya Engineering Science and Technology Innovation University (BESTIU) was established under the Andhra Pradesh Private Universities Act No. 3 of 2016 and officially notified under Act No. 6 of 2019. The University is also recognised under Section 2(f) of the UGC Act. It's located in the serene Mandrol Lakeside region of Sathya Sai District in a campus spanning over 230 acres and featuring more than 3.5 lakh sq. ft. of built-up space. Vision of BESTIU is to create a world-class social impact conglomerate where learning is accessible and affordable, innovators are nurtured, and transformative ideas are incubated. The University comprises of six Schools under its ambit and is conveniently located just 1.5 hours from Bengaluru International Airport, features state-of-the-art, eco-friendly infrastructure with a zero- carbon footprint.



About CFT

CFT is a pioneering global hub dedicated to accelerating innovation in emerging and converging technologies. By integrating education, frontier research, industry and international collaborations, CFT nurtures deep-tech talent and drives industry co-innovation. The platform supports the entire entrepreneurial lifecycle, moving from inspiration and research to prototypes, intellectual property, and the creation of venture-scale startups designed to solve the world's most pressing challenges.

OUR LEADERSHIP

Dr. Ashutosh Sharma

SCIENTIFIC CHAIR

Dr. Ashutosh Sharma is an Institute Chair Professor at Indian Institute of Technology Kanpur and a distinguished leader in science and technology policy. He has served as Secretary of the Department of Science and Technology, Government of India, and as President of the Indian National Science Academy. As the Scientific Chair of CFT - Centre for Future Tech, he brings deep expertise in research, innovation, and national-level technology leadership to guide the program's vision.



Dr. Rupa Vasudevan

FOUNDER AND CHANCELLOR

Dr. Rupa Vasudevan is an educationist, sociopreneur and visionary leader with over 20 years of experience in establishing institutions that provide holistic learning experiences. She is the Founder and Chancellor of Bharatiya Engineering Science and Technology Innovation University (BESTIU), Andhra Pradesh - Established in 2018 under the AP State Private Universities Act. Dr. Rupa Vasudevan is also the Co-Chairperson of the BEST Group (Gatti Valley Educational Institutions). Her commitment to education and social entrepreneurship drives her efforts to nurture future innovators.



Shri. Bharat Lal Meena, IAS Rtd

FOUNDER AND CHAIRMAN

Shri Bharat Lal Meena is a distinguished retired IAS officer with over 32 years of service in various departments of the Government of India and Karnataka. He is the Chairman of Bharatiya Engineering Science and Technology Innovation University (BESTIU), Andhra Pradesh. His leadership in the Indian Administrative Service and his dedication to public service have significantly contributed to the development of the education sector.



CFT OPERATIONAL MODEL

The 4 Core Pillars of CFT

INSPIRE

EXPONENTIAL GALLERY

To serve as a prelude to deep-tech work by transforming how learners perceive the future – moving from incremental 10% thinking to 10X exponential possibilities.

SOLVE

MOONSHOT FACTORY

To tackle 10X problems aligned with Sustainable Development Goals - SDGs and national priorities by applying exponential technologies, rather than seeking 10% improvements to existing solutions.

BUILD

DEEP TECH CONVERSION LAB

To provide world-class infrastructure where students and researchers build deployable solutions by converging multiple exponential technologies rather than working in silos.

SCALE

VENTURE STUDIO & ENTERPRISE

LAUNCHER

To function as a systematic company-building engine that actively co-creates startups. We provide operational muscle, technical resources, and strategic direction to transform concepts into venture-backed companies.



THE 9 DEEP-TECH VERTICALS

Next-Gen Internet & Computing

- AI Agents & AGI Research
- Cybersecurity & Web3 Edge
- Computing & IoT

Robotics & Autonomous Systems

- Humanoid Robots
- Autonomous Vehicles
- Industrial Automation 5.0

FinTech & Digital Economy

- Blockchain & DeFi
- Digital Public Infrastructure
- AI Risk & Underwriting

Quantum Computing

- Sovereign Computational Capability
- Hybrid Quantum-Classical AI
- Post-Quantum Cryptography

AgriTech & Food Tech

- Precision Agriculture & IoT
- Vertical Farming Systems
- Alternative Proteins

Genomics, BioTech & Health

- CRISPR & Gene Editing
- Digital Biology Platforms
- Predictive Healthcare AI

Energy & Green Tech

- Next-Gen Batteries & Storage
- Green Hydrogen Ecosystem
- Carbon Capture & Grid Tech

Space-Tech & Defense

- CubeSat & Orbital Systems
- Earth Observation Data
- Defense AI & Security

Industry 5.0

- Smart Factory
- Re-humanizing Factory Floor
- Sustainable & Circular





THE NEXT DECADE WON'T BE BUILT IN CLASSROOMS

It will be built by quantum physicists who understand finance. By biologists who can code. By engineers who think like entrepreneurs.

15 MILLION

Engineers graduate in India
every year

How many

are building
the future?

CFT EXISTS TO CHANGE THAT NUMBER

INTERNATIONAL UNIVERSITY PARTNERS

CFT has partnered with leading US universities to deliver world-class deep-tech education. Our partners are selected for their research excellence, industry connections, and commitment to innovation.

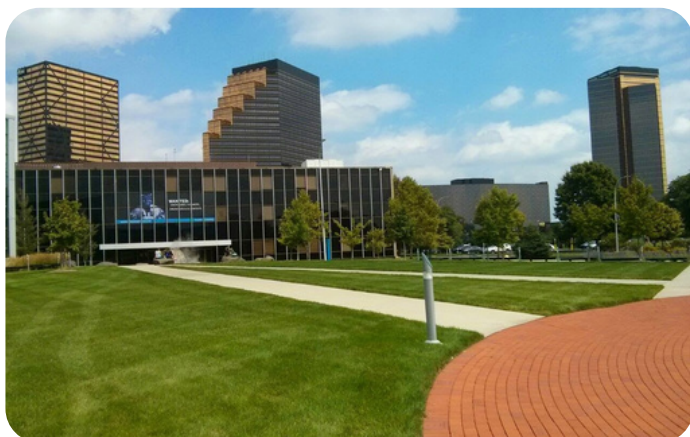


A prestigious Association of American Universities (AAU) member, Arizona ranks among the top public research institutions globally, offering expansive STEM networks, robust silicon-valley connections, and a massive global alumni network exceeding 300,000 leaders.

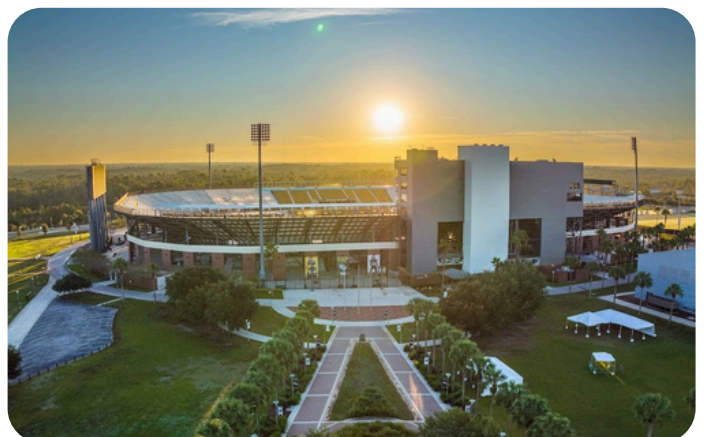


Internationally celebrated for one of the world's oldest and largest cooperative education (co-op) programs, RIT partners with over 3,000 top-tier global employers, guaranteeing students unparalleled, high-yield industry placement and hands-on professional depth.

Lawrence Technological University



Merging theory with economic impact, LTU is a powerhouse for industrial innovation and automotive tech, offering agile tech-lab learning environments, elite corporate mentorship pipelines, and a remarkable 92% post-graduation career placement rate.



Situated in the heart of one of America's most vibrant technology hubs, UCF is a premier engine for the US aerospace, defense, and tech sectors, consistently ranking as a top provider of graduate talent to companies like Lockheed Martin, Disney, and major tech giants.

INDUSTRY PARTNERS

CFT collaborates with leading technology companies to provide students with real-world industry exposure, mentorship, and career pathways in cutting-edge domains.





Strategic Collaboration: The B.Tech CSE program is offered by BESTIU in association with TCS.

Industry-Aligned Curriculum: Combines traditional academic learning with modern, real-world technology applications.

Specialized Semester-Wise Training: Provides dedicated, semester-wise training in Internet of Things (IoT) and Cloud Computing.

Practical Learning Model: Delivers education through expert-led sessions, hands-on assignments, and technology-oriented projects.

Core Skills Focus: Emphasizes the development of technical skills, analytical thinking, and overall professional development.

Career Readiness Support: Prepares students for the workforce through direct industry interaction, certification support, and 100% guaranteed internships.

Modern Tools Exposure: Ensures students gain practical exposure to current industry tools and platforms.

Target Career Paths: Equips graduates for roles in Cloud Computing, IoT, Software Engineering, and related tech domains.





Strategic Collaboration: The B.Tech CSE program is offered by BESTIU in collaboration with IBM.

Industry-Aligned Curriculum: Provides students with strong academic and technical exposure focused specifically on emerging technologies.

Specialized Expert-Led Courses: Features specialized courses delivered directly by IBM experts, including Python Programming, AI & ML Essentials, Machine Learning Engineering, Deep Learning, NLP, Applied LLM Development & Deployment, and Explainable AI (XAI).

Practical Learning Model: Emphasizes hands-on experience through dedicated project-based learning.

Broad Domain Exposure: Expands student knowledge into critical tech sectors such as Data Science, Cloud Computing, CyberSecurity, Automation, and Analytics.

Career Readiness Support: Offers students practical skills, valuable certification opportunities, and 100% guaranteed internship.

Target Career Paths: Equips and trains graduates for specialized roles in Artificial Intelligence, Machine Learning, Software Development, and Data Analytics.





Centre of Excellence in Semicon

Strategic Collaboration: The B.Tech VLSI program is offered by BESTIU in collaboration with Maven Silicon.

Industry-Aligned Curriculum: Provides students with specialized knowledge in semiconductor and chip design technologies.

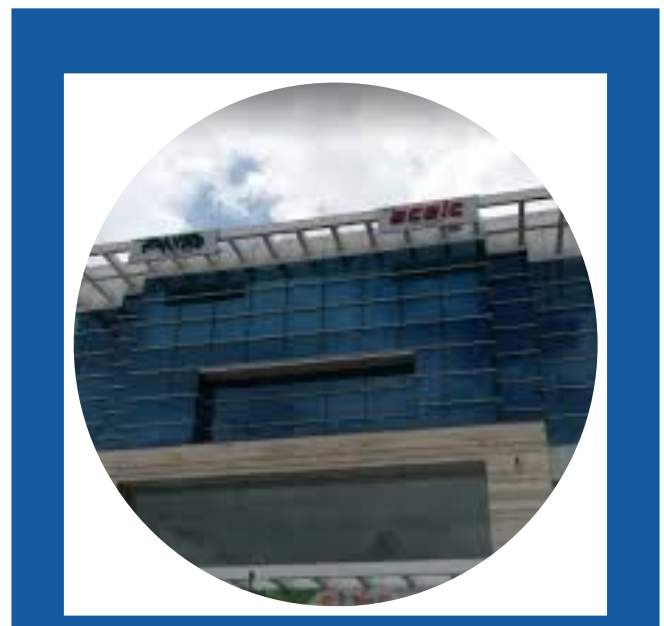
Specialized Expert-Led Courses: Features VLSI subjects taught across semesters directly by Maven Silicon experts through practical training, laboratory sessions, and workshops.

Practical Learning Model: Emphasizes hands-on experience through the execution of real-time projects.

Broad Domain Exposure: Covers critical technical areas including Digital Design, Verilog, FPGA, ASIC Design, RTL Design, Verification, and Physical Design.

Modern Tools Exposure: Utilizes industry-standard tools and methodologies to ensure real-world readiness.

Target Career Paths: Develops the strong technical skills, practical knowledge, and professional competency required for careers in the VLSI, Embedded Systems, and Semiconductor industries.





Bharat 1.ai
Humanity Centric AI City

Strategic Collaboration: The BS program is offered by BESTIU's CFT in primary partnership with Bharat1.ai.

Industry-Aligned Curriculum: Offers a deeply integrated, startup-first pedagogy that is firmly rooted in the Bangalore AI ecosystem.

Specialized Expert-Led Courses: Co-delivered by academic faculty and industry practitioners from Day 1, utilizing Bharat1.ai's advanced campus infrastructure, specialized AI innovation labs, and curated curriculum.

Practical Learning Model: Features an immersive 4-year learning model emphasizing project-based learning, peer learning, and grand challenge mentoring.

Broad Domain Exposure: Focuses on applying technology to critical sectors such as Healthcare, Mobility, Agriculture, Governance, and Climate Tech.

Career Readiness Support: Provides direct access to tech founders, investors, and startup studios, ensuring students secure robust internship placements and industry-ready skill certifications.

Target Career Paths: Prepares students to graduate with a strong innovation pipeline, shaping them into next-generation tech founders and AI leaders.





Bachelor of Science

B1 AI INNOVATION

A degree structured around doing, not knowing. The first year builds the foundations — design, mathematics, physics — that make everything that follows possible. Years two through four are increasingly practical, culminating in six months of field deployment and a capstone that ships to real users.

PROGRAM HIGHLIGHTS

- Live projects and case studies mentored by corporate professionals
- National and Global Hackathons
- Start working before graduating
- Techpark immersion and Corporate networking opportunities
- Advanced AI Labs and world class facilities

BTech

ComputerScience Engineering

BTech in
IoT and
Cloud Computing

BTech in AI & ML

BTech in VLSI

MTech

ComputerScience Engineering

MTech in
IoT and Cloud
Computing

MTech in AI & ML

MTech in VLSI

Powered by



INTERNATIONAL GRADUATION PATHWAY PROGRAMS

B.Tech/ BS Dual Degree Pathway (2+2 Framework)

Degrees Awarded: B.Tech from BESTIU + BS from US Partner University.

Years 1 & 2 (India Campus): Foundation modules, industry exposure, language training, visa processing, internship opportunities, core engineering, and advanced specializations.

Milestone: Completing foundational credits, verifying credit transfers, and securing the US F1 Student Visa.

Years 3 & 4 (US Campus): Major capstone projects, US campus placements, global alumni network integration, and post-study stayback (STEM OPT).

Graduation Milestone: Officially graduating with both the BESTIU B.Tech and US University BS degrees.

PARTNER UNIVERSITIES



Lawrence Technological University



INTERNATIONAL GRADUATION PATHWAY PROGRAMS

M.Tech/ MS Dual Degree Pathway (1+1 Framework)

Degrees Awarded: M.Tech from BESTIU + MS from US Partner University.

Year 1 (India Campus): Postgraduate foundation, core training, advanced specialization, language prep, industry exposure, internships, and visa processing.

Milestone: Verifying global postgraduate credit mapping and clearing the US visa process.

Year 2 (US Campus): Specialized master's project/thesis, US placements, alumni network access, and post-study stayback options (STEM OPT).

Graduation Milestone: Officially graduating with both the BESTIU M.Tech and US University MS degrees.

PARTNER UNIVERSITIES



Lawrence Technological University



UNIVERSITY OF
CENTRAL FLORIDA

FEE STRUCTURE

Fee Component	Fee per Student	Frequency
Tuition Fee	₹ 6,00,000	Annual
LMS and others	₹ 2,00,000	Annual
TOTAL FEE (Per Year)	₹ 8,00,000	Annual

Residential Fees - Food & Accommodation (Charged Separately)	₹ 1,920,000	On e Time
---	-------------	-----------

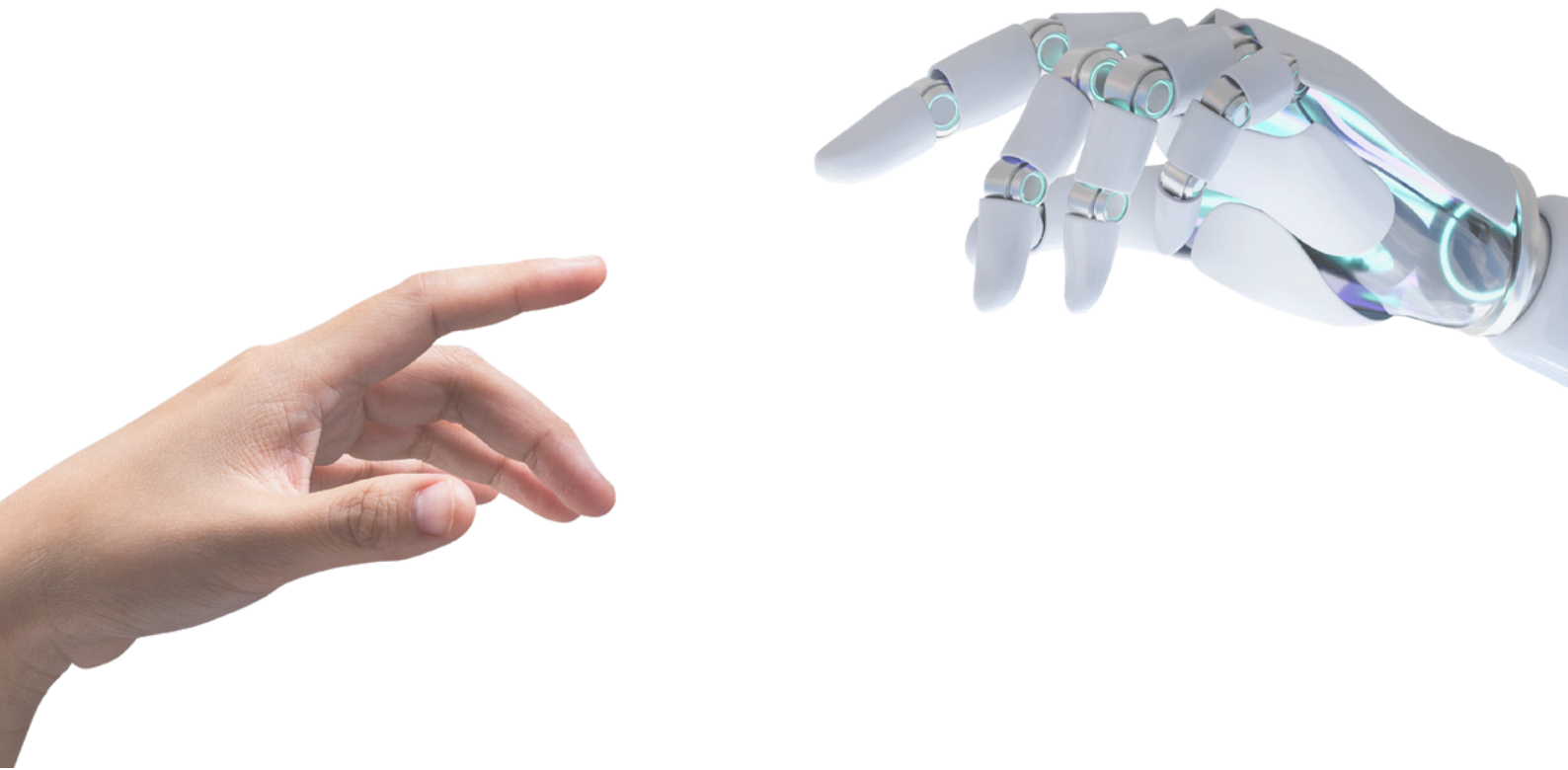
- An admission fee of ₹1,00,000 is payable at the time of registration, which is included in the tuition fee.
- For USA/Dubai pathway fees, please refer to the respective partner university website.
- All fees are subject to revision at the discretion of the institution.

ELIGIBILITY

BTech/ BS	12th pass PCM
MTech/ MS	BTech/ BE
Bachelor of Science AI Innovation	12th pass Arts, Science, Commerce

GALLERY WALL





SCHEDULE A CALL

+916366981402 | +916366981404

bdm.cft@bestiu.edu.in

Bharati ai, RGA Tech park, Sarjapura, Bengaluru

